



# Türme für Fledermäuse



# Hebegro Fledermaustürme



# Building a Better Bat House

The Complete Guide to Assembling, Placing, and Maintaining BCM Multi-Chamber Bat Houses and the BCM Bat House Kit

**Bat Conservation and Management**

220 North Old Stone House Road  
Carlisle, Pennsylvania 17015  
717.241.ABAT (voice and fax)  
www.batmanagement.com

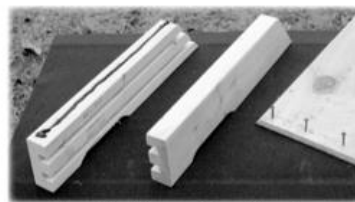


Figure 2. Begin front assembly, one side at a time.



Figure 3. TOP FRONT is assembled and beveled edges are flush, matching the sloped roof.



Figure 4. Completed front assembly with 1/2\"/>

## Assembly

### 1. Inspect Surfaces of All Plywood

Separate the plywood parts and inspect the roughened side of the FRONT, BACK, and ROOF pieces, and both sides of each Baffle piece. These surfaces have been scratched to provide footholds for bats inside the finished box. More footholds in the box will make the roost more attractive for mother bats searching for a place to raise young, so use a utility knife to add more scratches on any areas that seem sparse. Scratch marks should be no more than 1/4\"/>

2. Attach TOP- and BOTTOM-FRONT to SIDES  
Stand the two SIDES along the back (longer) edges on a workbench or other flat surface. Apply a bead of caulk along the entire front (shorter) edge of one SIDE only and attach the TOP-FRONT piece, scratched side down. The sloping edge of the SIDE should neatly meet the sloping edge along the top edge of the TOP-FRONT. Secure with four evenly spaced SCREWS. After one SIDE is securely attached, caulk the remaining SIDE and attach the TOP-FRONT with another four SCREWS as above. The TOP-FRONT is now attached to the SIDES (Figure 3).

Install the smaller BOTTOM-FRONT flush with the bottom edges of the SIDES. This should create an approximately 1/2\"/>

Tip: An exterior-grade construction adhesive has been provided for assembling the bat house to ensure maximum joint integrity. Roof repair sealant can be used as a second choice.

Tip: Excess adhesive should squeeze out from between all joints during proper assembly to assure a good seal. Smooth the excess adhesive along all outside edges using a damp cloth.

Tip: A surprisingly large number of screws (never nails) and adhesive caulk are necessary to ensure a long-term airtight seal.

## BUILDING A BAT HOUSE

### Bat Nursery House

#### Materials Needed (makes 2)

(See diagram)

1/2 sheet (4' x 4') 1/2\"/>

1/2 sheet (4' x 4') 3/8\"/>

Two pieces 1\"/>

One lb. 1 5/8\"/>

20-25 1 1/4\"/>

One quart black, water-based stain, exterior grade

One quart water-based primer, exterior grade

Two quarts flat water based paint or stain, exterior grade

One tube of paintable exterior grade caulk

#### Suggested Wood

We suggest using rough-sawn black locust, white oak, cedar or old barn wood because the bat house will last longer using these naturally decay-resistant materials

#### Optional materials

Black asphalt shingles

12-20 7/8\"/>

#### Recommended tools

Drill (1/8\"/>

Table saw

Drill bit

Paint brush

Caulk gun

Utility knife

Tape measure

#### Construction procedure

1. Measure and mark all wood as per cutting diagrams on pages 3-4. Cut out all parts.

2. In order to roughen interior and landing surfaces, score inside back wall (E), and partitions (G) with a utility knife or a sharp object. Space grooves 1/2\"/>

1/16\"/>

3. Apply two coats of black, water-based stain to interior surfaces. Do not use paint, as it will fill grooves.

4. Screw back (E) to sides (2 Ds), caulking whenever wood meets wood. Drill pilot holes so the wood does not crack.

5. Drill pilot holes, caulk and use screws to attach 5\"/>

6. Place a partition on, to within a 1/2\"/>

7. Repeat step 4 for remaining partitions (G) and spacers (H).

8. Caulk first and then screw front piece (B, C) to sides (Ds). Be sure top angles match (sand if necessary). Leave a 1/2\"/>

9. Attach roof supports (K) to the top inside of front (B) and back (E) pieces. Be careful that screws do not protrude into roosting chambers.

10. Caulk around all top surfaces, sanding first if necessary to ensure a good tight fit.

11. Screw roof (A) to side (D) and roof supports (K). Caulk all outside seams to properly seal roosting chamber.

12. Cut a line on underside of roof to act as a drip edge

13. Attach mounts to back of box, making sure there is 1/2-3/4\"/>

14. Prime the exterior of the house.

Paint exterior with two coats. Be sure to use stain on the landing surface on back wall (E) and not paint as paint will fill the grooves.

#### Construction without Vent

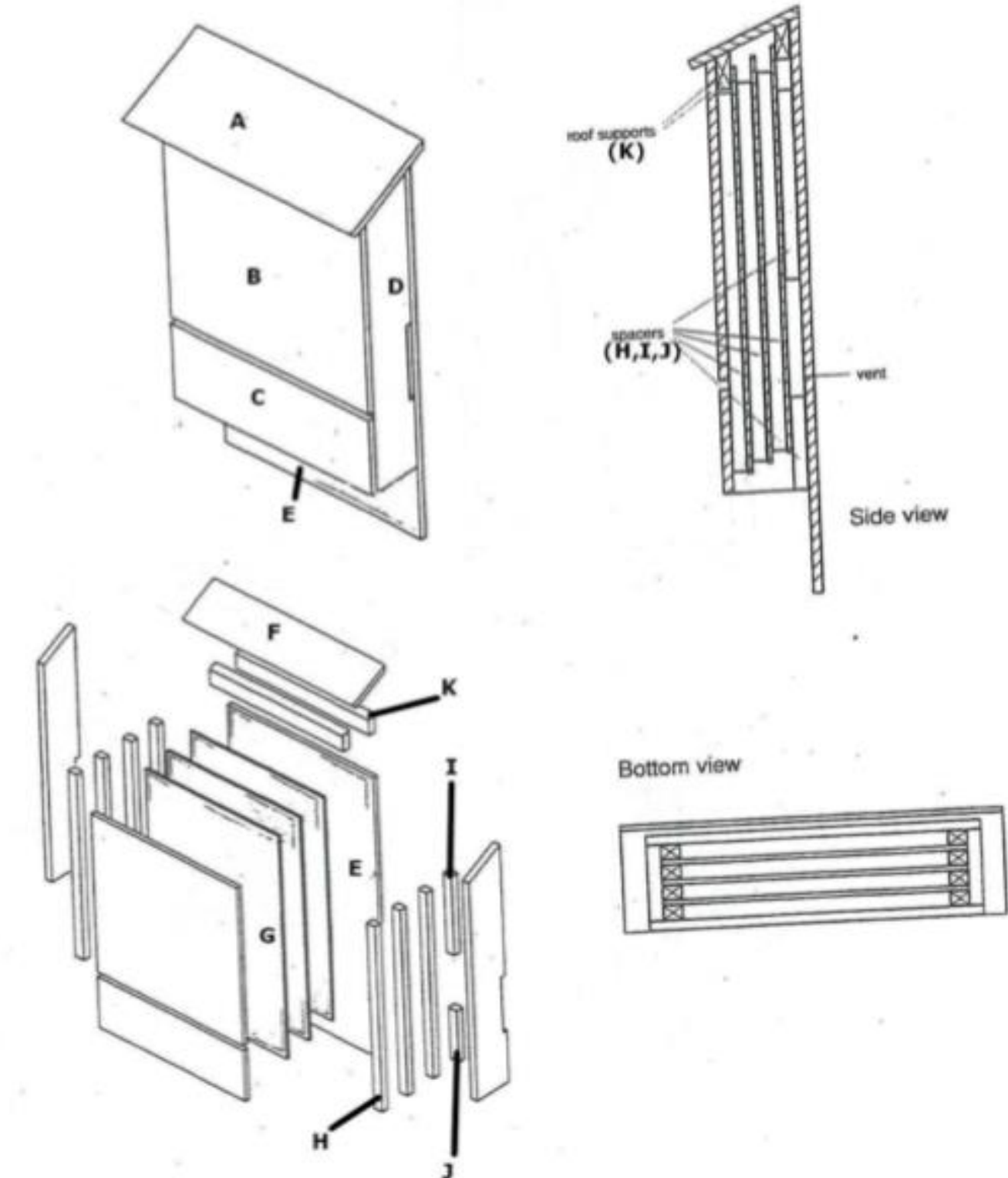
1. Do not cut vent on side pieces (D)

Spacers on back wall will be one 20 inch piece (H) instead of one 10 inch (I) and one 5 inch (J).

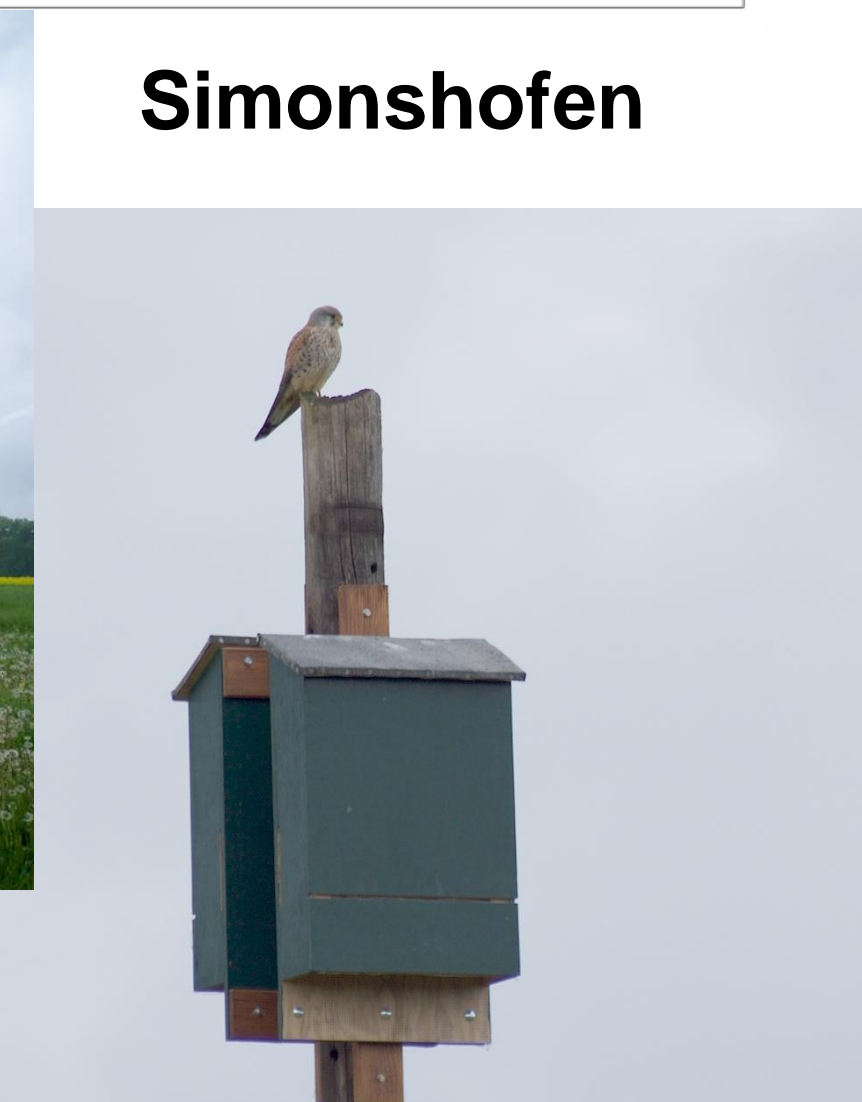
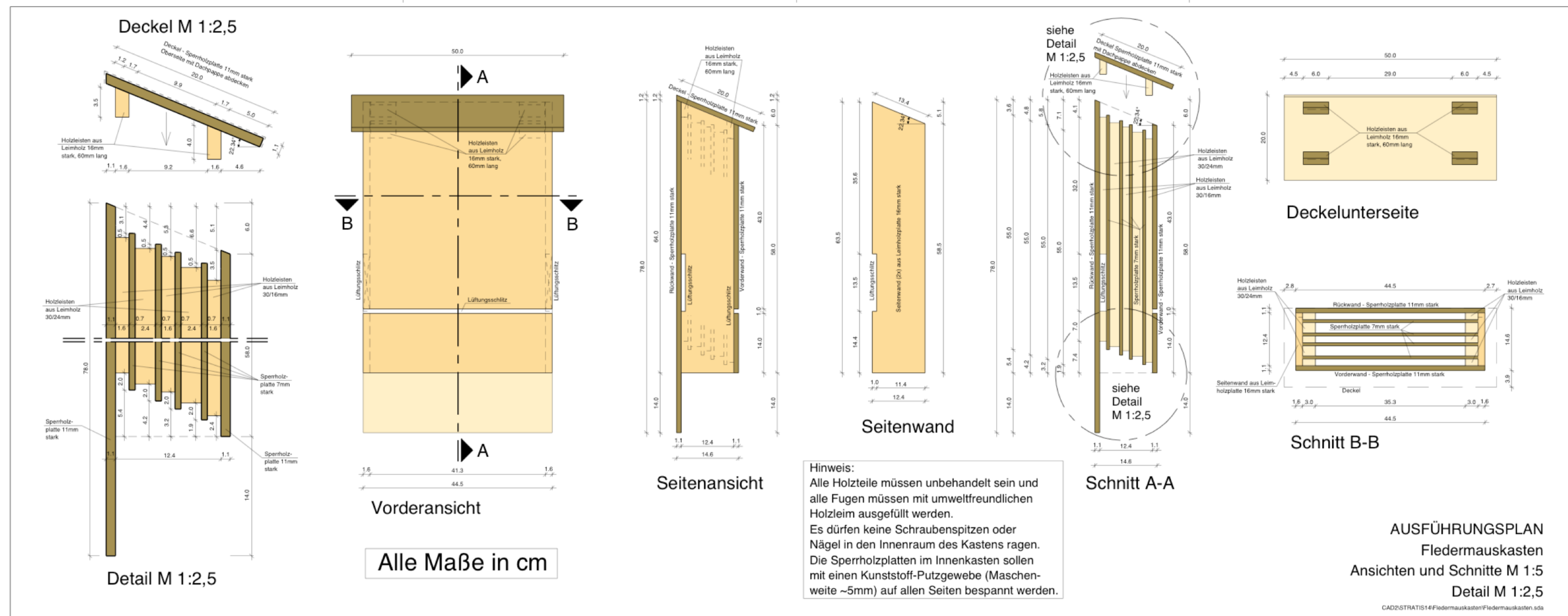
Plans adapted from Bat Conservation International's Nursery House Design and discussions with Kent Brinkerding

## BUILDING A BAT HOUSE

### Bat Nursery House



Maternity roost on right



**Amt für  
landwirtschaftliche  
Entwicklung  
Flurbereinigung**



## Wussten Sie das schon? 16 der 25 regelmäßig in Bayern nachgewiesenen Fledermausarten leben auch hier in Nürnberg.

Damit das auch weiterhin so bleibt, wollen wir den Tieren in unserer Stadt ein attraktives Angebot machen. Die mehrkammerigen Flachkästen sind so konstruiert, dass die Fledermäuse den Quartierspalt wechseln können, ohne den Kasten verlassen zu müssen. So können sie sich auch tagsüber je nach Sonneneinstrahlung sicher ein optimal Plätzchen suchen.

Die Kästen wurden von den Auszubildenden im Schreinerhandwerk der Berufsschule B11 im Rahmen des Fledermausschutz-Projekts der Regierung von Mittelfranken gebaut. SÖR kümmert sich zusammen mit dem städtischen Fledermausschutz um die Auswahl der Standorte und die Aufstellung der Kästen. Die Betreuung der Kästen übernimmt die Fledermausbetreuerin der Stadt.

Freuen Sie sich mit uns über die neuen Fledermaushäuser!  
...und schauen Sie ruhig mal vorsichtig und kurz mit der Taschenlampe von unten rein!



Abendseglergruppe in einem Nistkasten.



### Impressum:

Herausgeber:  
Servicebetrieb Öffentlicher Raum Nürnberg  
Eigenbetrieb der Stadt Nürnberg  
Bauhof 9  
90402 Nürnberg  
Telefon 09 11 / 231-76 37  
Telefax 09 11 / 231-1 44 10  
soer@stadt.nuernberg.de  
soer.nuernberg.de

Druck und Satz: hgs5 GmbH

Bilder: Dietmar Nill (Titelbild), Dr. Stefan Böger (Regierung von Mittelfranken) (Kästen), Detlev & Bettina Kordes (Mücken- und Rauhaufledermaus/Abendseglergruppe), Hans-Joachim Fünfstück (Piclease) (Zwergfledermaus - Pipistrellus pipistrellus), Wilhelm Gallberger AT, Kärnten, Klagenfurt (Piclease) (Abendsegler - Nyctalus noctula), André Winkel (SÖR) (Aufstellen der Kästen)



Servicebetrieb  
Öffentlicher Raum  
Nürnberg

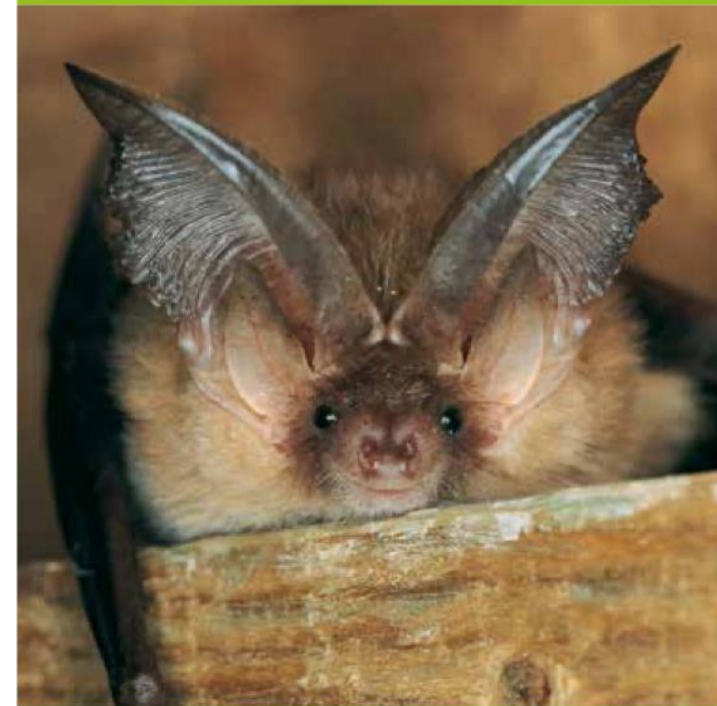
NÜRNBERG

NÜRNBERG

# Fledermaus-Haus Daheim in Nürnberg



## Fledermaus-Haus Daheim in Nürnberg





Ein Haus für  
die Fledermaus  
Zusatzquartier für heimische Fledermäuse

Mehr erfahren Sie hier:  
[fledermausprojekt.kleingartner-nuernberg.de](http://fledermausprojekt.kleingartner-nuernberg.de)



Stadtverband Nürnberg der Kleingärtner e.V.



Regierung von Mittelfranken



B11  
Kommunales Zentrum für  
Bildung, Jugend und Sport

